



HOW TO ORDER

Reset

INDIVIDUAL BASE

Port size	Side ports	Bottom ports	Bottom cylinder ports 2 and 4.	Bottom port 1
G1/4"	MB-A1C-121	MB-A1C-123	MB-A1C-122	MB-A1C-124
G3/8"	MB-A1C-131	MB-A1C-133	MB-A1C-132	MB-A1C-134

INDIVIDUAL BASE ACCORDING TO VDMA 24345

Port size	Side ports	Bottom ports
G1/4"	HB-A1A-A	HB-A1A-B

MANIFOLD BASE

Port size	Side ports	Bottom ports	Bottom cylinder ports 2 and 4.	Bottom port 1
G1/4"	MM-A1C-121	MM-A1C-123	MM-A1C-122	MM-A1C-124
G3/8"	MM-A1C-131	MM-A1C-133	MM-A1C-132	MM-A1C-134

Manifold fastening kit : N-63002-01.

MANIFOLD BASE ACCORDING TO VDMA 24345

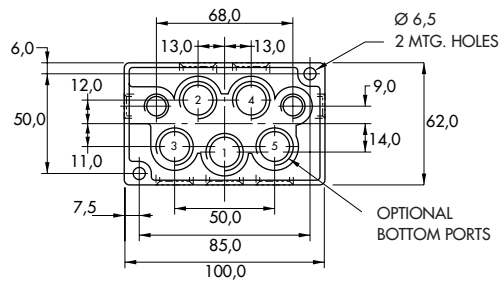
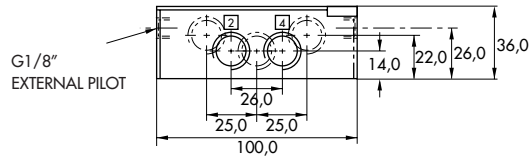
Port size	Bottom cylinder ports 2 and 4
G1/4"	HM-A1A-C

End plate kit : HM-A1A-D.

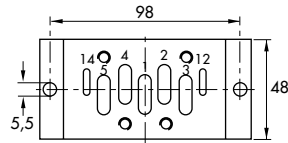
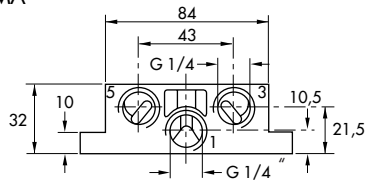
DIMENSIONS

Individual

DIN 5599/1



VDMA



Manifold

